

## Raccordi a pressare (pressfittings) PF01 in acciaio inox

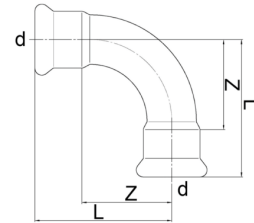


### Caratteristiche del prodotto:

- **Contorno - M**
- Con pellicola sigillante blu all'estremità
- Approvati secondo norma **DVGW W 534 / W 270**
- Adatti per impianti di **acqua potabile, sanitari e di riscaldamento, nonché tecnologia industriale**
- **Igienici, resistenti ad alte portate, bassa conducibilità termica** rispetto ad altri materiali
- Consegnati con una guarnizione in **EPDM-LBP già inserita**, le guarnizioni in FKM / FPM possono essere acquistate separatamente
- Pressione di esercizio consigliata: **max. 16 bar / a +20°C**

### Raccordi a gomito

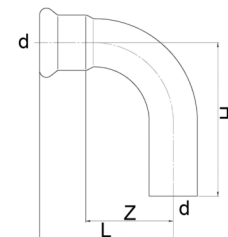
Nome: **Raccordo a gomito 90°**  
 Tipo: PF01-00  
 Materiale: Acciaio inox 1.4404 / AISI 316L  
 Versione: I/I, r=1,2



#### Dimensioni del collegamento del tubo per I/I, r=1,2 (in mm)

| DN  | d     | L     | Z     | kg     | Codice articolo |
|-----|-------|-------|-------|--------|-----------------|
| 12  | 15,0  | 43,0  | 23,0  | 0,0500 | PF01001102      |
| 15  | 18,0  | 46,0  | 26,0  | 0,0500 | PF01001103      |
| 20  | 22,0  | 53,0  | 32,0  | 0,0820 | PF01001104      |
| 25  | 28,0  | 64,0  | 41,0  | 0,1200 | PF01001105      |
| 32  | 35,0  | 78,0  | 52,0  | 0,1760 | PF01001106      |
| 40  | 42,0  | 90,0  | 60,0  | 0,2500 | PF01001107      |
| 50  | 54,0  | 110,0 | 75,0  | 0,3840 | PF01001108      |
| 65  | 76,1  | 157,0 | 104,0 | 1,2010 | PF01001109      |
| 80  | 88,9  | 178,0 | 118,0 | 1,6100 | PF01001111      |
| 100 | 108,0 | 215,0 | 140,0 | 2,2980 | PF01001112      |

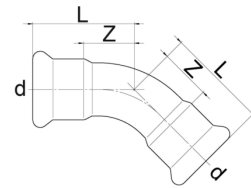
Nome: **Raccordo a gomito 90°**  
 Tipo: PF01-00  
 Materiale: Acciaio inox 1.4404 / AISI 316L  
 Versione: I/A, r=1,2



#### Dimensioni del collegamento del tubo per I/A, r=1,2 (in mm)

| DN  | d     | L     | Z     | H     | kg     | Codice articolo |
|-----|-------|-------|-------|-------|--------|-----------------|
| 12  | 15,0  | 43,0  | 23,0  | 49,0  | 0,0510 | PF01001202      |
| 15  | 18,0  | 46,0  | 26,0  | 52,0  | 0,0660 | PF01001203      |
| 20  | 22,0  | 53,0  | 32,0  | 57,0  | 0,0800 | PF01001204      |
| 25  | 28,0  | 64,0  | 41,0  | 71,0  | 0,1200 | PF01001205      |
| 32  | 35,0  | 78,0  | 52,0  | 90,0  | 0,1800 | PF01001206      |
| 40  | 42,0  | 90,0  | 60,0  | 102,0 | 0,2600 | PF01001207      |
| 50  | 54,0  | 110,0 | 75,0  | 122,0 | 0,6260 | PF01001208      |
| 65  | 76,1  | 157,0 | 104,0 | 173,0 | 1,1300 | PF01001209      |
| 80  | 88,9  | 178,0 | 118,0 | 199,0 | 1,6040 | PF01001210      |
| 100 | 108,0 | 215,0 | 140,0 | 235,0 | 2,3300 | PF01001211      |

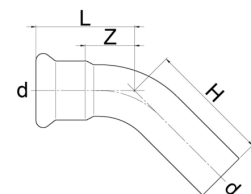
Nome: **Raccordo a gomito 45°**  
 Tipo: PF01-00  
 Materiale: Acciaio inox 1.4404 / AISI 316L  
 Versione: I/I, r=1,2



### Dimensioni del collegamento del tubo per I/I, r=1,2 (in mm)

| DN  | d     | L     | Z    | kg     | Codice articolo |
|-----|-------|-------|------|--------|-----------------|
| 12  | 15,0  | 32,0  | 12,0 | 0,0430 | PF01002102      |
| 15  | 18,0  | 34,0  | 14,0 | 0,0560 | PF01002103      |
| 20  | 22,0  | 38,0  | 18,0 | 0,0700 | PF01002104      |
| 25  | 28,0  | 42,0  | 22,0 | 0,0980 | PF01002105      |
| 32  | 35,0  | 52,0  | 28,0 | 0,1370 | PF01002106      |
| 40  | 42,0  | 60,0  | 30,0 | 0,1990 | PF01002107      |
| 50  | 54,0  | 72,0  | 37,0 | 0,2900 | PF01002108      |
| 65  | 76,1  | 102,0 | 49,0 | 0,8870 | PF01002109      |
| 80  | 88,9  | 115,0 | 55,0 | 1,1650 | PF01002110      |
| 100 | 108,0 | 142,0 | 67,0 | 1,7440 | PF01002111      |

Nome: **Raccordo a gomito 45°**  
 Tipo: PF01-00  
 Materiale: Acciaio inox 1.4404 / AISI 316L  
 Versione: I/A, r=1,2

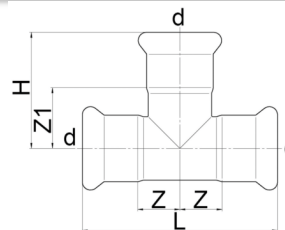


### Dimensioni del collegamento del tubo per I/A, r=1,2 (in mm)

| DN  | d     | L     | Z    | H     | kg     | Codice articolo |
|-----|-------|-------|------|-------|--------|-----------------|
| 12  | 15,0  | 32,0  | 12,0 | 43,0  | 0,0420 | PF01002202      |
| 15  | 18,0  | 34,0  | 14,0 | 48,0  | 0,0580 | PF01002203      |
| 20  | 22,0  | 38,0  | 18,0 | 52,0  | 0,0700 | PF01002204      |
| 25  | 28,0  | 42,0  | 22,0 | 56,0  | 0,1030 | PF01002205      |
| 32  | 35,0  | 52,0  | 28,0 | 62,0  | 0,1400 | PF01002206      |
| 40  | 42,0  | 60,0  | 30,0 | 72,0  | 0,2280 | PF01002207      |
| 50  | 54,0  | 72,0  | 37,0 | 84,0  | 0,3030 | PF01002208      |
| 65  | 76,1  | 102,0 | 49,0 | 120,0 | 0,8490 | PF01002209      |
| 80  | 88,9  | 115,0 | 55,0 | 134,0 | 1,1180 | PF01002210      |
| 100 | 108,0 | 142,0 | 67,0 | 163,0 | 1,7380 | PF01002211      |

**Raccordi a T**

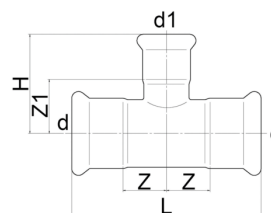
Nome: **Raccordo a T**  
 Tipo: PF01-01  
 Materiale: Acciaio inox 1.4404 / AISI 316L



**Dimensioni del collegamento del tubo (in mm)**

| DN  | d     | L     | H     | Z    | Z1   | kg     | Codice articolo |
|-----|-------|-------|-------|------|------|--------|-----------------|
| 12  | 15,0  | 66,0  | 39,0  | 15,0 | 19,0 | 0,0650 | PF01010002      |
| 15  | 18,0  | 68,0  | 40,0  | 17,0 | 20,0 | 0,0840 | PF01010003      |
| 20  | 22,0  | 74,0  | 44,0  | 21,0 | 23,0 | 0,1080 | PF01010004      |
| 25  | 28,0  | 84,0  | 52,0  | 25,0 | 29,0 | 0,1510 | PF01010005      |
| 32  | 35,0  | 100,0 | 57,0  | 28,0 | 31,0 | 0,1950 | PF01010006      |
| 40  | 42,0  | 114,0 | 66,0  | 37,0 | 36,0 | 0,2680 | PF01010007      |
| 50  | 54,0  | 138,0 | 77,0  | 46,0 | 42,0 | 0,3890 | PF01010008      |
| 65  | 76,1  | 230,0 | 111,0 | 59,0 | 58,0 | 1,2030 | PF01010009      |
| 80  | 88,9  | 260,0 | 128,0 | 67,0 | 68,0 | 1,5800 | PF01010010      |
| 100 | 108,0 | 310,0 | 156,0 | 80,0 | 81,0 | 2,2190 | PF01010011      |

Nome: **Raccordo a T ridotto**  
 Tipo: PF01-01  
 Materiale: Acciaio inox 1.4404 / AISI 316L

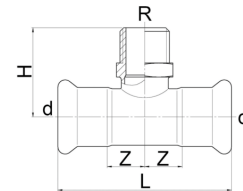


**Dimensioni del collegamento del tubo (in mm)**

| DN        | d    | d1   | L     | H     | Z    | Z1   | kg     | Codice articolo |
|-----------|------|------|-------|-------|------|------|--------|-----------------|
| 15-12-15  | 18,0 | 15,0 | 68,0  | 40,0  | 14,0 | 20,0 | 0,0790 | PF01010103.1    |
| 20-12-20  | 22,0 | 15,0 | 74,0  | 42,0  | 16,0 | 22,0 | 0,0920 | PF01010104.1    |
| 20-15-20  | 22,0 | 18,0 | 74,0  | 42,0  | 16,0 | 22,0 | 0,0970 | PF01010104.2    |
| 25-12-25  | 28,0 | 15,0 | 84,0  | 45,0  | 19,0 | 25,0 | 0,1230 | PF01010105.1    |
| 25-15-25  | 28,0 | 18,0 | 84,0  | 45,0  | 19,0 | 25,0 | 0,1260 | PF01010105.2    |
| 25-20-25  | 28,0 | 22,0 | 84,0  | 47,0  | 19,0 | 26,0 | 0,1340 | PF01010105.3    |
| 32-12-32  | 35,0 | 15,0 | 100,0 | 49,0  | 24,0 | 29,0 | 0,1630 | PF01010106.1    |
| 32-15-32  | 35,0 | 18,0 | 100,0 | 49,0  | 24,0 | 29,0 | 0,1620 | PF01010106.2    |
| 32-20-32  | 35,0 | 22,0 | 100,0 | 51,0  | 24,0 | 30,0 | 0,1710 | PF01010106.3    |
| 32-25-32  | 35,0 | 28,0 | 100,0 | 56,0  | 24,0 | 33,0 | 0,1790 | PF01010106.4    |
| 40-12-40  | 42,0 | 15,0 | 114,0 | 53,0  | 27,0 | 33,0 | 0,2150 | PF01010107.1    |
| 40-15-40  | 42,0 | 18,0 | 114,0 | 53,0  | 27,0 | 33,0 | 0,2180 | PF01010107.2    |
| 40-20-40  | 42,0 | 22,0 | 114,0 | 55,0  | 27,0 | 34,0 | 0,2290 | PF01010107.3    |
| 40-25-40  | 42,0 | 28,0 | 114,0 | 60,0  | 27,0 | 37,0 | 0,2400 | PF01010107.4    |
| 40-32-40  | 42,0 | 35,0 | 114,0 | 61,0  | 27,0 | 34,0 | 0,2450 | PF01010107.5    |
| 50-12-50  | 54,0 | 15,0 | 138,0 | 59,0  | 34,0 | 39,0 | 0,3090 | PF01010108.1    |
| 50-15-50* | 54,0 | 18,0 | 138,0 | 59,0  | 34,0 | 39,0 | 0,3210 | PF01010108.2    |
| 50-20-50  | 54,0 | 22,0 | 138,0 | 61,0  | 34,0 | 40,0 | 0,3260 | PF01010108.3    |
| 50-25-50  | 54,0 | 28,0 | 138,0 | 66,0  | 34,0 | 43,0 | 0,3370 | PF01010108.4    |
| 50-32-50  | 54,0 | 35,0 | 138,0 | 67,0  | 34,0 | 40,0 | 0,3460 | PF01010108.5    |
| 50-40-50  | 54,0 | 42,0 | 138,0 | 72,0  | 34,0 | 38,0 | 0,3730 | PF01010108.6    |
| 65-20-65  | 76,1 | 22,0 | 230,0 | 71,0  | 62,0 | 50,0 | 0,9310 | PF01010109.1    |
| 65-25-65  | 76,1 | 28,0 | 230,0 | 76,0  | 62,0 | 53,0 | 0,9510 | PF01010109.2    |
| 65-32-65  | 76,1 | 35,0 | 230,0 | 77,0  | 62,0 | 50,0 | 0,9340 | PF01010109.3    |
| 65-40-65  | 76,1 | 42,0 | 230,0 | 82,0  | 62,0 | 48,0 | 0,9500 | PF01010109.4    |
| 65-50-65  | 76,1 | 54,0 | 230,0 | 87,0  | 62,0 | 53,0 | 0,9770 | PF01010109.5    |
| 80-20-80  | 88,9 | 22,0 | 260,0 | 78,0  | 70,0 | 58,0 | 1,2060 | PF01010110.1    |
| 80-25-80  | 88,9 | 28,0 | 260,0 | 83,0  | 70,0 | 61,0 | 1,2210 | PF01010110.2    |
| 80-32-80  | 88,9 | 35,0 | 260,0 | 84,0  | 70,0 | 58,0 | 1,2230 | PF01010110.3    |
| 80-40-80  | 88,9 | 42,0 | 260,0 | 89,0  | 70,0 | 58,0 | 1,2460 | PF01010110.4    |
| 80-50-80  | 88,9 | 54,0 | 260,0 | 94,0  | 70,0 | 63,0 | 1,2720 | PF01010110.5    |
| 80-65-80  | 88,9 | 76,1 | 310,0 | 118,0 | 70,0 | 69,0 | 1,4470 | PF01010110.6    |

\*Produzione relativa agli ordini

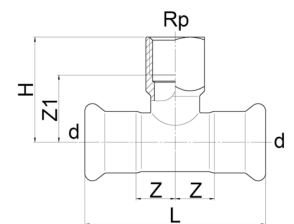
Nome: **Raccordo a T con filettatura esterna (maschio)**  
 Tipo: PF01-01  
 Materiale: Acciaio inox 1.4404 / AISI 316L  
 Versione: Filettatura esterna (maschio)  
 Filettatura: Secondo norma DIN EN 10226-1



### Dimensioni del collegamento del tubo (in mm)

| DN | d    | R      | L     | H    | Z    | kg     | Codice articolo |
|----|------|--------|-------|------|------|--------|-----------------|
| 12 | 15,0 | 1/2"   | 66,0  | 36,0 | 13,0 | 0,0740 | PF01010202.1    |
| 15 | 18,0 | 1/2"   | 68,0  | 38,0 | 14,0 | 0,0870 | PF01010203.1    |
| 20 | 22,0 | 1/2"   | 74,0  | 41,0 | 16,0 | 0,1040 | PF01010204.1    |
| 20 | 22,0 | 3/4"   | 74,0  | 44,0 | 16,0 | 0,1410 | PF01010204.2    |
| 20 | 22,0 | 1"     | 74,0  | 47,0 | 16,0 | 0,1620 | PF01010204.3    |
| 25 | 28,0 | 1/2"   | 84,0  | 44,0 | 19,0 | 0,1340 | PF01010205.1    |
| 25 | 28,0 | 1"     | 84,0  | 50,0 | 19,0 | 0,1910 | PF01010205.2    |
| 32 | 35,0 | 3/4"   | 100,0 | 50,0 | 35,0 | 0,2010 | PF01010206.1    |
| 32 | 35,0 | 1 1/4" | 100,0 | 56,0 | 24,0 | 0,2570 | PF01010206.2    |

Nome: **Raccordo a T con filettatura interna (femmina)**  
 Tipo: PF01-01  
 Materiale: Acciaio inox 1.4404 / AISI 316L  
 Versione: Filettatura interna  
 Filettatura: Secondo norma DIN EN 10226-1, ISO 7-1

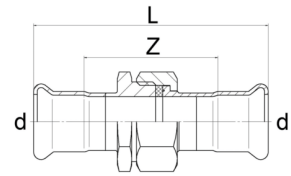


### Dimensioni del collegamento del tubo (in mm)

| DN | d    | Rp     | L     | H    | Z    | Z1   | kg     | Codice articolo |
|----|------|--------|-------|------|------|------|--------|-----------------|
| 12 | 15,0 | 1/2"   | 66,0  | 38,0 | 13,0 | 24,0 | 0,0810 | PF01010302.1    |
| 15 | 18,0 | 1/2"   | 68,0  | 41,0 | 14,0 | 27,0 | 0,0990 | PF01010303.1    |
| 15 | 18,0 | 3/4"   | 68,0  | 43,0 | 14,0 | 28,0 | 0,1140 | PF01010303.2    |
| 20 | 22,0 | 1/2"   | 74,0  | 42,0 | 16,0 | 28,0 | 0,1310 | PF01010304.1    |
| 20 | 22,0 | 3/4"   | 74,0  | 45,0 | 16,0 | 30,0 | 0,1380 | PF01010304.2    |
| 25 | 28,0 | 1/2"   | 84,0  | 45,0 | 19,0 | 31,0 | 0,1560 | PF01010305.1    |
| 25 | 28,0 | 3/4"   | 84,0  | 47,0 | 19,0 | 32,0 | 0,1630 | PF01010305.2    |
| 25 | 28,0 | 1"     | 84,0  | 52,0 | 19,0 | 36,0 | 0,1970 | PF01010305.3    |
| 32 | 35,0 | 1/2"   | 100,0 | 49,0 | 24,0 | 34,0 | 0,1820 | PF01010306.1    |
| 32 | 35,0 | 3/4"   | 100,0 | 51,0 | 24,0 | 36,0 | 0,2010 | PF01010306.2    |
| 32 | 35,0 | 1"     | 100,0 | 56,0 | 24,0 | 40,0 | 0,2280 | PF01010306.3    |
| 32 | 35,0 | 1 1/4" | 100,0 | 57,0 | 24,0 | 37,0 | 0,2760 | PF01010306.4    |
| 40 | 42,0 | 1/2"   | 114,0 | 53,0 | 27,0 | 39,0 | 0,2380 | PF01010307.1    |
| 40 | 42,0 | 3/4"   | 114,0 | 54,0 | 27,0 | 39,0 | 0,2570 | PF01010307.2    |
| 40 | 42,0 | 1"     | 114,0 | 59,0 | 27,0 | 43,0 | 0,2850 | PF01010307.3    |
| 40 | 42,0 | 1 1/2" | 114,0 | 60,0 | 27,0 | 40,0 | 0,3540 | PF01010307.4    |
| 50 | 54,0 | 1/2"   | 138,0 | 58,0 | 34,0 | 44,0 | 0,3470 | PF01010308.1    |
| 50 | 54,0 | 3/4"   | 138,0 | 60,0 | 34,0 | 45,0 | 0,3560 | PF01010308.2    |
| 50 | 54,0 | 1"     | 138,0 | 65,0 | 34,0 | 49,0 | 0,4100 | PF01010308.3    |
| 50 | 54,0 | 2"     | 138,0 | 78,0 | 34,0 | 54,0 | 0,5780 | PF01010308.4    |
| 65 | 76,1 | 3/4"   | 230,0 | 70,0 | 62,0 | 55,0 | 0,9440 | PF01010309.1    |
| 65 | 76,1 | 2"     | 230,0 | 88,0 | 62,0 | 64,0 | 1,1650 | PF01010309.2    |
| 80 | 88,9 | 3/4"   | 260,0 | 78,0 | 70,0 | 62,0 | 1,2350 | PF01010310.1    |
| 80 | 88,9 | 2"     | 260,0 | 96,0 | 70,0 | 71,0 | 1,4600 | PF01010310.2    |

**Raccordi dritti a pressare**

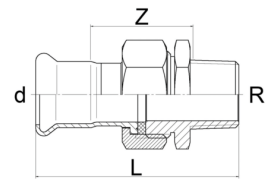
Nome: **Raccordo dritto a pressare**  
 Tipo: PF01-02  
 Materiale: Acciaio inox 1.4404 / AISI 316L



**Dimensioni del collegamento del tubo (in mm)**

| DN | d    | L     | Z    | kg     | Codice articolo |
|----|------|-------|------|--------|-----------------|
| 12 | 15,0 | 89,0  | 49,0 | 0,1120 | PF01020002      |
| 15 | 18,0 | 92,0  | 52,0 | 0,1500 | PF01020003      |
| 20 | 22,0 | 99,0  | 57,0 | 0,1960 | PF01020004      |
| 25 | 28,0 | 112,0 | 66,0 | 0,2810 | PF01020005      |
| 32 | 35,0 | 119,0 | 67,0 | 0,3680 | PF01020006      |
| 40 | 42,0 | 128,0 | 68,0 | 0,4890 | PF01020007      |
| 50 | 54,0 | 141,0 | 71,0 | 0,6960 | PF01020008      |

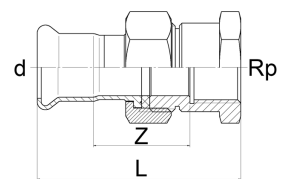
Nome: **Raccordo dritto con filettatura esterna (maschio)**  
 Tipo: PF01-02  
 Materiale: Acciaio inox 1.4404 / AISI 316L  
 Versione: Filettatura esterna (maschio)  
 Filettatura: Secondo norma DIN EN 10226-1



**Dimensioni del collegamento del tubo (in mm)**

| DN | d    | R      | L     | Z    | kg     | Codice articolo |
|----|------|--------|-------|------|--------|-----------------|
| 12 | 15,0 | 1/2"   | 70,0  | 33,0 | 0,0920 | PF01020102.1    |
| 12 | 15,0 | 3/4"   | 74,0  | 37,0 | 0,1340 | PF01020102.2    |
| 15 | 18,0 | 1/2"   | 74,0  | 37,0 | 0,1360 | PF01020103.1    |
| 15 | 18,0 | 3/4"   | 74,0  | 37,0 | 0,1370 | PF01020103.2    |
| 20 | 22,0 | 1/2"   | 76,0  | 38,0 | 0,1400 | PF01020104.1    |
| 20 | 22,0 | 3/4"   | 82,0  | 43,0 | 0,1400 | PF01020104.2    |
| 20 | 22,0 | 1"     | 86,0  | 43,0 | 0,2070 | PF01020104.3    |
| 25 | 28,0 | 1"     | 93,0  | 49,0 | 0,3360 | PF01020105.1    |
| 32 | 35,0 | 1 1/4" | 102,0 | 52,0 | 0,4630 | PF01020106.1    |
| 40 | 42,0 | 1 1/2" | 107,0 | 53,0 | 0,5630 | PF01020107.1    |
| 50 | 54,0 | 2"     | 118,0 | 55,0 | 0,9570 | PF01020108.1    |

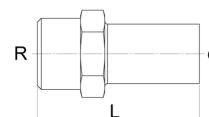
Nome: **Raccordo dritto con filettatura interna (femmina)**  
 Tipo: PF01-02  
 Materiale: Acciaio inox 1.4404 / AISI 316L  
 Versione: Filettatura interna (femmina)  
 Filettatura: Secondo norma DIN EN 10226-1



**Dimensioni del collegamento del tubo (in mm)**

| DN | d    | Rp     | L     | Z    | kg     | Codice articolo |
|----|------|--------|-------|------|--------|-----------------|
| 12 | 15,0 | 1/2"   | 70,0  | 34,0 | 0,0960 | PF01020202.1    |
| 12 | 15,0 | 3/4"   | 72,0  | 38,0 | 0,1190 | PF01020202.2    |
| 15 | 18,0 | 1/2"   | 72,0  | 36,0 | 0,1000 | PF01020203.1    |
| 15 | 18,0 | 3/4"   | 76,0  | 38,0 | 0,1540 | PF01020203.2    |
| 20 | 22,0 | 3/4"   | 81,0  | 42,0 | 0,1950 | PF01020204.1    |
| 20 | 22,0 | 1"     | 82,0  | 42,0 | 0,2340 | PF01020204.2    |
| 25 | 28,0 | 1"     | 88,0  | 45,0 | 0,3100 | PF01020205.1    |
| 32 | 35,0 | 1 1/4" | 94,0  | 46,0 | 0,4060 | PF01020206.1    |
| 40 | 42,0 | 1 1/2" | 99,0  | 47,0 | 0,5430 | PF01020207.1    |
| 50 | 54,0 | 2"     | 108,0 | 50,0 | 0,7470 | PF01020208.1    |

Nome: **Raccordo dritto maschio**  
 Tipo: PF01-03  
 Materiale: Acciaio inox 1.4404 / AISI 316L  
 Versione: Filettatura esterna (maschio)  
 Filettatura: Secondo norma DIN EN 10226-1

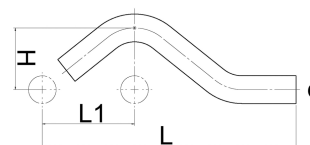


**Dimensioni del collegamento del tubo (in mm)**

| DN | d    | R      | L     | kg     | Codice articolo |
|----|------|--------|-------|--------|-----------------|
| 12 | 15,0 | 1/2"   | 52,0  | 0,0640 | PF01030002      |
| 15 | 18,0 | 1/2"   | 57,0  | 0,0660 | PF01030003      |
| 20 | 22,0 | 3/4"   | 59,0  | 0,0880 | PF01030004      |
| 25 | 28,0 | 1"     | 66,0  | 0,1280 | PF01030005      |
| 32 | 35,0 | 1 1/4" | 80,0  | 0,2120 | PF01030006      |
| 40 | 42,0 | 1 1/2" | 91,0  | 0,3140 | PF01030007      |
| 50 | 54,0 | 2"     | 107,0 | 0,3460 | PF01030008      |

**Raccordi a ponte**

Nome: **Raccordo a ponte**  
 Tipo: PF01-04  
 Materiale: Acciaio inox 1.4404 / AISI 316L

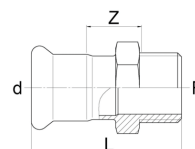


**Dimensioni del collegamento del tubo (in mm)**

| DN | d    | L     | L1   | H    | kg     | Codice articolo |
|----|------|-------|------|------|--------|-----------------|
| 12 | 15,0 | 158,0 | 57,0 | 37,0 | 0,1050 | PF01040002      |
| 15 | 18,0 | 165,0 | 60,0 | 40,0 | 0,1450 | PF01040003      |
| 20 | 22,0 | 178,0 | 65,0 | 44,0 | 0,1960 | PF01040004      |
| 25 | 28,0 | 210,0 | 74,0 | 50,0 | 0,2110 | PF01040005      |

**Raccordi a pressione Maschio / Femmina / Gomito / Giunto / Flangia**

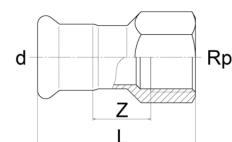
Nome: **Raccordo a pressione maschio**  
 Tipo: PF01-05-00  
 Materiale: Acciaio inox 1.4404 / AISI 316L  
 Versione: Filettatura esterna (maschio)  
 Filettatura: Secondo norma DIN EN 10226-1, ISO 7-1



**Dimensioni del collegamento del tubo (in mm)**

| DN  | d     | R      | L     | Z    | kg     | Codice articolo |
|-----|-------|--------|-------|------|--------|-----------------|
| 12  | 15,0  | 1/2"   | 54,0  | 19,0 | 0,0420 | PF01050002.1    |
| 12  | 15,0  | 3/4"   | 58,0  | 20,0 | 0,0750 | PF01050002.2    |
| 15  | 18,0  | 1/2"   | 54,0  | 19,0 | 0,0530 | PF01050003.1    |
| 15  | 18,0  | 3/4"   | 58,0  | 24,0 | 0,0810 | PF01050003.2    |
| 20  | 22,0  | 1/2"   | 56,0  | 20,0 | 0,0650 | PF01050004.1    |
| 20  | 22,0  | 3/4"   | 60,0  | 23,0 | 0,0930 | PF01050004.2    |
| 20  | 22,0  | 1"     | 63,0  | 23,0 | 0,1150 | PF01050004.3    |
| 25  | 28,0  | 3/4"   | 65,0  | 25,0 | 0,1070 | PF01050005.1    |
| 25  | 28,0  | 1"     | 68,0  | 26,0 | 0,1290 | PF01050005.2    |
| 25  | 28,0  | 1 1/4" | 70,0  | 25,0 | 0,1690 | PF01050005.3    |
| 32  | 35,0  | 1"     | 69,0  | 24,0 | 0,1590 | PF01050006.1    |
| 32  | 35,0  | 1 1/4" | 71,0  | 24,0 | 0,1650 | PF01050006.2    |
| 32  | 35,0  | 1 1/2" | 71,0  | 24,0 | 0,2040 | PF01050006.3    |
| 40  | 42,0  | 1 1/4" | 76,0  | 28,0 | 0,1920 | PF01050007.1    |
| 40  | 42,0  | 1 1/2" | 76,0  | 28,0 | 0,2220 | PF01050007.2    |
| 50  | 54,0  | 1 1/2" | 84,0  | 29,0 | 0,2980 | PF01050008.1    |
| 50  | 54,0  | 2"     | 90,0  | 28,0 | 0,3580 | PF01050008.2    |
| 65  | 76,1  | 2 1/2" | 120,0 | 35,0 | 0,6930 | PF01050009.1    |
| 80  | 88,9  | 3"     | 132,0 | 37,0 | 0,8740 | PF01050010.1    |
| 100 | 108,0 | 4"     | 157,0 | 42,0 | 1,0620 | PF01050011.1    |

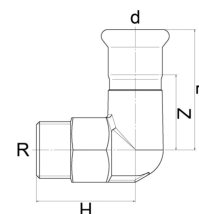
Nome: **Raccordo a pressare femmina**  
 Tipo: PF01-05-01  
 Materiale: Acciaio inox 1.4404 / AISI 316L  
 Versione: Filettatura interna (femmina)  
 Filettatura: Secondo norma DIN EN 10226-1, ISO 7-1



### Dimensioni del collegamento del tubo (in mm)

| DN | d    | Rp     | L     | Z    | kg     | Codice articolo |
|----|------|--------|-------|------|--------|-----------------|
| 12 | 15,0 | 1/2"   | 55,0  | 20,0 | 0,0530 | PF01050102.1    |
| 12 | 15,0 | 3/4"   | 59,0  | 21,0 | 0,0740 | PF01050102.2    |
| 15 | 18,0 | 1/2"   | 57,0  | 24,0 | 0,0620 | PF01050103.1    |
| 15 | 18,0 | 3/4"   | 59,0  | 26,0 | 0,0800 | PF01050103.2    |
| 20 | 22,0 | 1/2"   | 58,0  | 24,0 | 0,0830 | PF01050104.1    |
| 20 | 22,0 | 3/4"   | 61,0  | 25,0 | 0,0930 | PF01050104.2    |
| 20 | 22,0 | 1"     | 66,0  | 26,0 | 0,1190 | PF01050104.3    |
| 25 | 28,0 | 3/4"   | 65,0  | 26,0 | 0,1210 | PF01050105.1    |
| 25 | 28,0 | 1"     | 70,0  | 28,0 | 0,1300 | PF01050105.2    |
| 25 | 28,0 | 1 1/4" | 71,0  | 26,0 | 0,1640 | PF01050105.3    |
| 32 | 35,0 | 1"     | 66,0  | 20,0 | 0,1820 | PF01050106.1    |
| 32 | 35,0 | 1 1/4" | 72,0  | 25,0 | 0,1880 | PF01050106.2    |
| 32 | 35,0 | 1 1/2" | 72,0  | 25,0 | 0,2060 | PF01050106.3    |
| 40 | 42,0 | 1 1/4" | 71,0  | 20,0 | 0,1810 | PF01050107.1    |
| 40 | 42,0 | 1 1/2" | 77,0  | 26,0 | 0,3560 | PF01050107.2    |
| 50 | 54,0 | 1 1/2" | 76,0  | 21,0 | 0,3200 | PF01050108.1    |
| 50 | 54,0 | 2"     | 94,0  | 34,0 | 0,4000 | PF01050108.2    |
| 65 | 76,1 | 2 1/2" | 117,0 | 38,0 | 0,5640 | PF01050109.1    |

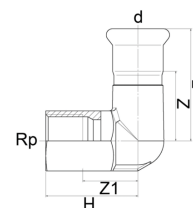
Nome: **Raccordo a gomito 90° filettatura maschio**  
 Tipo: PF01-05-02  
 Materiale: Acciaio inox 1.4404 / AISI 316L  
 Versione: Filettatura esterna (maschio)  
 Filettatura: Secondo norma DIN EN 10226-1, ISO 7-1



### Dimensioni del collegamento del tubo (in mm)

| DN | d    | R      | L    | H    | Z    | kg     | Codice articolo |
|----|------|--------|------|------|------|--------|-----------------|
| 12 | 15,0 | 1/2"   | 55,0 | 37,0 | 35,0 | 0,1010 | PF01050202.1    |
| 15 | 18,0 | 1/2"   | 57,0 | 39,0 | 37,0 | 0,1120 | PF01050203.1    |
| 20 | 22,0 | 3/4"   | 61,0 | 46,0 | 39,0 | 0,1700 | PF01050204.1    |
| 25 | 28,0 | 1"     | 68,0 | 54,0 | 45,0 | 0,2450 | PF01050205.1    |
| 32 | 35,0 | 1 1/4" | 76,0 | 63,0 | 50,0 | 0,4300 | PF01050206.1    |
| 40 | 42,0 | 1 1/2" | 84,0 | 67,0 | 54,0 | 0,5970 | PF01050207.1    |
| 50 | 54,0 | 2"     | 94,0 | 77,0 | 59,0 | 0,8200 | PF01050208.1    |

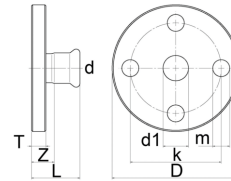
Nome: **Raccordo a gomito 90° filettatura femmina**  
 Tipo: PF01-05-03  
 Materiale: Acciaio inox 1.4404 / AISI 316L  
 Versione: Filettatura interna (femmina)  
 Filettatura: Secondo norma DIN EN 10226-1, ISO 7-1



### Dimensioni del collegamento del tubo (in mm)

| DN | d    | R      | L    | H    | Z    | kg     | Codice articolo |
|----|------|--------|------|------|------|--------|-----------------|
| 12 | 15,0 | 1/2"   | 55,0 | 37,0 | 35,0 | 0,1050 | PF01050302.1    |
| 15 | 18,0 | 1/2"   | 57,0 | 39,0 | 37,0 | 0,1160 | PF01050303.1    |
| 20 | 22,0 | 3/4"   | 61,0 | 46,0 | 39,0 | 0,1760 | PF01050304.1    |
| 25 | 28,0 | 1"     | 68,0 | 54,0 | 45,0 | 0,2530 | PF01050305.1    |
| 32 | 35,0 | 1 1/4" | 76,0 | 63,0 | 50,0 | 0,4330 | PF01050306.1    |

Nome: **Raccordo flangiato**  
 Tipo: PF01-05-04  
 Materiale: Acciaio inox 1.4404 / AISI 316L



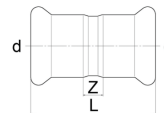
**Dimensioni del collegamento del tubo (in mm)**

| DN  | d     | D     | k     | L     | T    | m    | D1    | Z    | Fori | kg     | Codice articolo |
|-----|-------|-------|-------|-------|------|------|-------|------|------|--------|-----------------|
| 12  | 15,0  | 95,0  | 65,0  | 43,0  | 11,0 | 14,0 | 12,0  | 23,0 | 4    | 0,5580 | PF01050402      |
| 15  | 18,0  | 95,0  | 65,0  | 43,0  | 11,0 | 14,0 | 15,0  | 23,0 | 4    | 0,5500 | PF01050403      |
| 20  | 22,0  | 105,0 | 75,0  | 47,0  | 12,0 | 14,0 | 20,0  | 26,0 | 4    | 0,7740 | PF01050404      |
| 25  | 28,0  | 115,0 | 85,0  | 54,0  | 14,0 | 14,0 | 25,0  | 31,0 | 4    | 1,0570 | PF01050405      |
| 32  | 35,0  | 140,0 | 100,0 | 62,0  | 15,0 | 18,0 | 32,0  | 36,0 | 4    | 1,7080 | PF01050406      |
| 40  | 42,0  | 150,0 | 110,0 | 70,0  | 16,0 | 18,0 | 40,0  | 40,0 | 4    | 2,1040 | PF01050407      |
| 50  | 54,0  | 165,0 | 125,0 | 84,0  | 18,0 | 18,0 | 50,0  | 49,0 | 4    | 2,8340 | PF01050408      |
| 65  | 76,1  | 185,0 | 145,0 | 129,0 | 18,0 | 18,0 | 65,0  | 76,0 | 4    | 3,6240 | PF01050409      |
| 80  | 88,9  | 200,0 | 160,0 | 148,0 | 20,0 | 18,0 | 80,0  | 88,0 | 8    | 4,4440 | PF01050410      |
| 100 | 108,0 | 220,0 | 180,0 | 173,0 | 20,0 | 18,0 | 100,0 | 98,0 | 8    | 5,3840 | PF01050411      |

**Raccordi – giunti a pressione**

**Giunto a pressione I/I**

Tipo: PF01-06  
 Materiale: Acciaio inox 1.4404 / AISI 316L  
 Versione: I/I

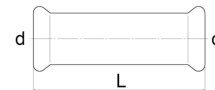


**Dimensioni del collegamento del tubo (in mm)**

| DN  | d     | L     | Z    | kg     | Codice articolo |
|-----|-------|-------|------|--------|-----------------|
| 12  | 15,0  | 48,0  | 8,0  | 0,0340 | PF01060002      |
| 15  | 18,0  | 48,0  | 8,0  | 0,0400 | PF01060003      |
| 20  | 22,0  | 50,0  | 8,0  | 0,0510 | PF01060004      |
| 25  | 28,0  | 54,0  | 8,0  | 0,0670 | PF01060005      |
| 32  | 35,0  | 62,0  | 10,0 | 0,0950 | PF01060006      |
| 40  | 42,0  | 71,0  | 11,0 | 0,1380 | PF01060007      |
| 50  | 54,0  | 83,0  | 13,0 | 0,1900 | PF01060008      |
| 65  | 76,1  | 141,0 | 35,0 | 0,5880 | PF01060009      |
| 80  | 88,9  | 162,0 | 42,0 | 0,7670 | PF01060010      |
| 100 | 108,0 | 194,0 | 44,0 | 1,1880 | PF01060011      |

**Giunto a pressione I/I**

Tipo: PF01-06  
 Materiale: Acciaio inox 1.4404 / AISI 316L  
 Versione: I/I



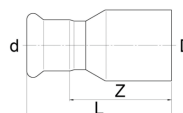
**Dimensioni del collegamento del tubo (in mm)**

| DN  | d     | L     | kg     | Codice articolo |
|-----|-------|-------|--------|-----------------|
| 12  | 15,0  | 67,0  | 0,0450 | PF01060102      |
| 15  | 18,0  | 68,0  | 0,0540 | PF01060103      |
| 20  | 22,0  | 73,0  | 0,0690 | PF01060104      |
| 25  | 28,0  | 83,0  | 0,0970 | PF01060105      |
| 32  | 35,0  | 98,0  | 0,1400 | PF01060106      |
| 40  | 42,0  | 115,0 | 0,1980 | PF01060107      |
| 50  | 54,0  | 138,0 | 0,2990 | PF01060108      |
| 65  | 76,1  | 229,0 | 0,3600 | PF01060109      |
| 80  | 88,9  | 263,0 | 0,4500 | PF01060110      |
| 100 | 108,0 | 313,0 | 0,5000 | PF01060111      |



## Raccordo di riduzione

Tipo: PF01-07  
 Materiale: Acciaio inox 1.4404 / AISI 316L

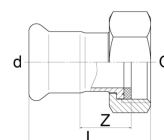
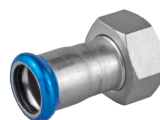


### Dimensioni del collegamento del tubo (in mm)

| DN     | D     | d    | L     | Z     | kg     | Codice articolo |
|--------|-------|------|-------|-------|--------|-----------------|
| 15-12  | 18,0  | 15,0 | 62,0  | 42,0  | 0,0390 | PF01070003.1    |
| 20-12  | 22,0  | 15,0 | 62,0  | 42,0  | 0,0430 | PF01070004.1    |
| 20-15  | 22,0  | 18,0 | 60,0  | 40,0  | 0,0450 | PF01070004.2    |
| 25-12  | 28,0  | 15,0 | 63,0  | 43,0  | 0,0560 | PF01070005.1    |
| 25-15  | 28,0  | 18,0 | 67,0  | 47,0  | 0,0590 | PF01070005.2    |
| 25-20  | 28,0  | 22,0 | 66,0  | 45,0  | 0,0610 | PF01070005.3    |
| 32-12  | 35,0  | 15,0 | 75,0  | 50,0  | 0,0780 | PF01070006.1    |
| 32-15  | 35,0  | 18,0 | 77,0  | 57,0  | 0,0820 | PF01070006.2    |
| 32-20  | 35,0  | 22,0 | 68,0  | 47,0  | 0,0840 | PF01070006.3    |
| 32-25  | 35,0  | 28,0 | 76,0  | 53,0  | 0,0850 | PF01070006.4    |
| 40-12  | 42,0  | 15,0 | 83,0  | 62,0  | 0,1060 | PF01070007.1    |
| 40-15  | 42,0  | 18,0 | 82,0  | 62,0  | 0,1110 | PF01070007.2    |
| 40-20  | 42,0  | 22,0 | 82,0  | 63,0  | 0,1260 | PF01070007.3    |
| 40-25  | 42,0  | 28,0 | 82,0  | 60,0  | 0,1190 | PF01070007.4    |
| 40-32  | 42,0  | 35,0 | 80,0  | 54,0  | 0,1150 | PF01070007.5    |
| 50-12  | 54,0  | 15,0 | 95,0  | 74,0  | 0,1680 | PF01070008.1    |
| 50-15  | 54,0  | 18,0 | 94,0  | 73,0  | 0,1740 | PF01070008.2    |
| 50-20  | 54,0  | 22,0 | 95,0  | 74,0  | 0,1650 | PF01070008.3    |
| 50-25  | 54,0  | 28,0 | 100,0 | 77,0  | 0,1920 | PF01070008.4    |
| 50-32  | 54,0  | 35,0 | 96,0  | 70,0  | 0,1870 | PF01070008.5    |
| 50-40  | 54,0  | 42,0 | 92,0  | 72,0  | 0,1750 | PF01070008.6    |
| 65-40  | 76,1  | 42,0 | 150,0 | 120,0 | 0,4650 | PF01070009.1    |
| 65-50  | 76,1  | 54,0 | 145,0 | 110,0 | 0,4650 | PF01070009.2    |
| 80-50  | 88,9  | 54,0 | 147,0 | 112,0 | 0,6760 | PF01070010.1    |
| 80-65  | 88,9  | 76,1 | 161,0 | 108,0 | 0,5910 | PF01070010.2    |
| 100-50 | 108,0 | 54,0 | 163,0 | 128,0 | 0,7390 | PF01070011.1    |
| 100-65 | 108,0 | 76,1 | 184,0 | 131,0 | 0,8590 | PF01070011.2    |
| 100-80 | 108,0 | 88,9 | 203,0 | 143,0 | 1,0000 | PF01070011.3    |

## Raccordo / collegamento a vite femmina

Materiale: Acciaio inox 1.4404 / AISI 316L  
 Tipo: PF01-08  
 Versione: Filettatura interna (femmina)  
 Filettatura: Secondo norma DIN EN ISO 228-1

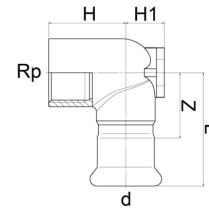


### Dimensioni del collegamento del tubo (in mm)

| DN | d    | G      | L    | Z    | kg     | Codice articolo |
|----|------|--------|------|------|--------|-----------------|
| 12 | 15,0 | 1/2"   | 50,0 | 18,0 | 0,0410 | PF01080002.1    |
| 12 | 15,0 | 3/4"   | 47,0 | 18,0 | 0,0930 | PF01080002.2    |
| 15 | 18,0 | 1/2"   | 51,0 | 18,0 | 0,0580 | PF01080003.1    |
| 15 | 18,0 | 3/4"   | 52,0 | 20,0 | 0,0770 | PF01080003.2    |
| 20 | 22,0 | 1"     | 54,0 | 21,0 | 0,1360 | PF01080004.1    |
| 25 | 28,0 | 1"     | 59,0 | 24,0 | 0,1590 | PF01080005.1    |
| 25 | 28,0 | 1 1/4" | 61,0 | 26,0 | 0,2110 | PF01080005.2    |
| 32 | 35,0 | 1 1/2" | 64,0 | 25,0 | 0,2340 | PF01080006.1    |
| 40 | 42,0 | 1 3/4" | 69,0 | 25,0 | 0,2810 | PF01080007.1    |
| 50 | 54,0 | 2 3/8" | 75,0 | 24,0 | 0,3610 | PF01080008.1    |

## Raccordo a gomito 90° filettatura interna (femmina)

Materiale: Acciaio inox 1.4404 / AISI 316L  
 Tipo: PF01-09  
 Versione: Filettatura interna (femmina)  
 Filettatura: Secondo norma DIN EN 10226-1, ISO 7-1

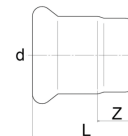


### Dimensioni del collegamento del tubo (in mm)

| DN | d    | Rp   | L    | H    | H1   | Z    | kg     | Codice articolo |
|----|------|------|------|------|------|------|--------|-----------------|
| 12 | 15,0 | 1/2" | 50,0 | 30,0 | 13,0 | 30,0 | 0,0990 | PF01090002      |
| 15 | 18,0 | 1/2" | 50,0 | 30,0 | 13,0 | 30,0 | 0,1020 | PF01090003      |
| 20 | 22,0 | 3/4" | 55,0 | 34,0 | 17,0 | 34,0 | 0,1560 | PF01090004      |

## Tappo a pressare di tenuta

Tipo: PF01-10  
 Materiale: Acciaio inox 1.4404 / AISI 316L



### Dimensioni del collegamento del tubo (in mm)

| DN  | d     | L     | Z    | kg     | Codice articolo |
|-----|-------|-------|------|--------|-----------------|
| 12  | 15,0  | 34,0  | 14,0 | 0,0230 | PF01100002      |
| 15  | 18,0  | 35,0  | 15,0 | 0,0280 | PF01100003      |
| 20  | 22,0  | 39,0  | 18,0 | 0,0400 | PF01100004      |
| 25  | 28,0  | 48,0  | 25,0 | 0,0600 | PF01100005      |
| 32  | 35,0  | 51,0  | 25,0 | 0,0790 | PF01100006      |
| 40  | 42,0  | 59,0  | 29,0 | 0,1150 | PF01100007      |
| 50  | 54,0  | 67,0  | 32,0 | 0,1630 | PF01100008      |
| 65  | 76,1  | 94,0  | 41,0 | 0,4220 | PF01100009      |
| 80  | 88,9  | 103,0 | 43,0 | 0,5430 | PF01100010      |
| 100 | 108,0 | 124,0 | 49,0 | 0,7870 | PF01100011      |

**Guarnizioni\***

**EPDM**

Tipo: PF01-11-00  
 Materiale: EPDM-LBP (permeabile se non pressato)  
 Temperatura di esercizio: -35°C fino a +135°C  
 Applicazione: Applicazioni per acqua potabile

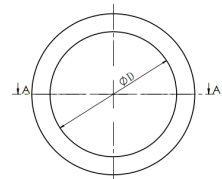
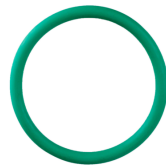
| D (in mm) | d   | Codice articolo |
|-----------|-----|-----------------|
| 15,0      | 2,6 | PF01110002      |
| 18,0      | 2,6 | PF01110003      |
| 22,0      | 3,3 | PF01110004      |
| 28,0      | 3,1 | PF01110005      |
| 35,0      | 3,1 | PF01110006      |
| 42,0      | 4,1 | PF01110007      |
| 54,0      | 4,1 | PF01110008      |



**FPM/FKM**

Tipo: PF01-11-01  
 Materiale: FPM/FKM  
 Temperatura di esercizio: -20°C fino a +200°C  
 Applicazione: Per applicazioni come aria compressa e gas vari

| D (in mm) | d    | Codice articolo |
|-----------|------|-----------------|
| 15,0      | 2,6  | PF01110102      |
| 18,0      | 2,6  | PF01110103      |
| 22,0      | 3,3  | PF01110104      |
| 28,0      | 3,1  | PF01110105      |
| 35,0      | 3,1  | PF01110106      |
| 42,0      | 4,1  | PF01110107      |
| 54,0      | 4,1  | PF01110108      |
| 76,1      | 7,0  | PF01110109      |
| 88,9      | 8,0  | PF01110110      |
| 108,0     | 10,0 | PF01110111      |



\*Le guarnizioni in EPDM fino alle dimensioni di 54 mm sono installate con tenuta LBP („leak before press“). Le altre guarnizioni hanno una tenuta standard.

**Istruzioni per l'installazione:**

I raccordi a pressare vengono forniti con guarnizioni in EPDM inserite, nella versione LBP („leak before press“). In alternativa si possono ottenere guarnizioni in FPM / FKM separatamente. I materiali di tenuta EPDM e FPM / FKM sono resistenti ai comuni additivi dell'acqua potabile.

Lo speciale design della tenuta LBP consente un controllo rapido e affidabile dei raccordi a pressare. Se il raccordo non è stato pressato o è stato pressato in modo non corretto, l'acqua fuoriuscirà alla pressione di circa 1,0 bar.

Il design della tenuta LBP è installato nelle guarnizioni EPDM fino a 54,0 mm. Con le guarnizioni di ricambio FPM / FKM, tutte le larghezze nominali hanno una tenuta standard.

Tutti i raccordi a pressare hanno una pellicola sigillante blu sull'estremità, che si stacca se il raccordo è pressato correttamente.

Le immagini riportate sono simili all'originale, ci riserviamo di applicare modifiche tecniche e dimensionali.